

What to Expect Guide and Programme: Wren's World



LOWRY



Photo Credit: Tom Doona

This guide is designed to **support you** to have a **great experience** when visiting **Lowry to see Wren's World**.

For more information on getting to the venue, parking, accessibility, food and drink, and to experience the Virtual Tour, please visit the **[venue website here](#)**

If you haven't visited before, it might be a little tricky, so prepare in advance and give yourself enough time.

Who makes the show?



Hello! We are **Colour the Clouds**, and we write and make **shows** for **young people and their families**.

We work with **actors who bring the story to life on stage**. And we also work with **creatives who help us with music, lights, animation, props, set, costume and accessibility**.

Writer & Producer - Sarah Birch

Composer & Producer - Catherine Kingston

Director & Producer - Christabel Fox

Technical Manager & Producer - Mark Fox

Stage Manager - Sabine Sulmeistere

Assistant Stage Manager - Phil Treadwell Middle

Set & Costume Designer - Celia Perkins

Animator - Adam Orton

Projection Consultant - Andrew Crofts

Access Consultant - Ash Cox

Lighting Designer - Charlotte Stoker

Sound Engineer - Art Bailey

Wren - Olivia Brindley

Robin - Katie Cannon



Who performs in the show?

Olivia is the actor who plays **Wren**



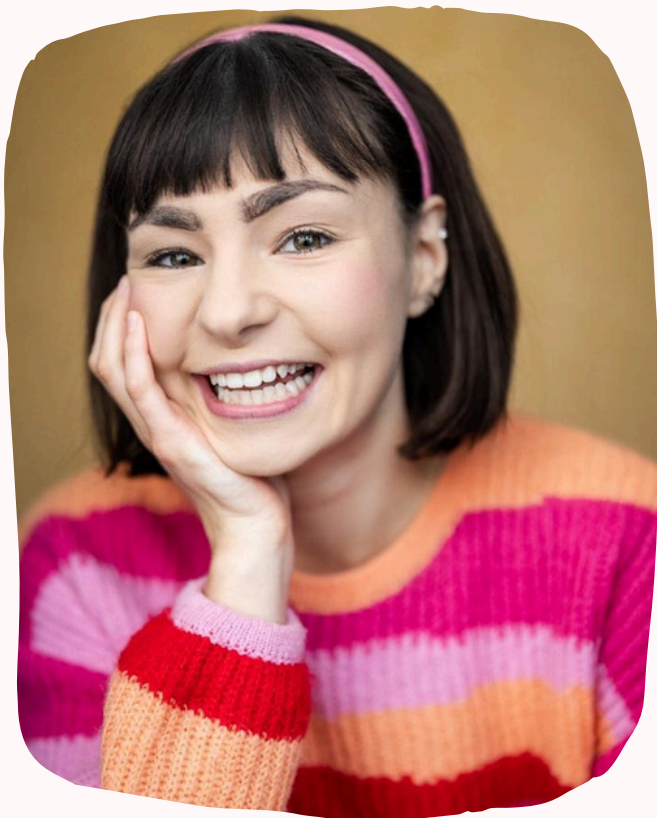
Katie is the actor who plays **Robin**, **Wren's** sister.

“I hope it is truthful and empowering seeing Wren regulate and stimming confidently. It is a privilege to show her practice self-soothing on stage, loyally navigating her ginormous adventures with Robin, as they do their sisterhood! The joy that is Wren letting Robin in on her world brings the sisters even closer together.” - Olivia

“I am really excited to be bringing Robin to life; I have enjoyed the challenge of working out how to portray the complexities of a young sibling of an Autistic child and the many hats they can wear. I hope I have brought a fun, kind and truthful representation of so many people's reality.” - Katie



Olivia Brindley is proud to be working with Colour the Clouds again, after having shared their original R&D for this show with Katie at the Lowry back in 2024, 'Nest'. Recent credits include: Aleena in 'Aleena's Garden' - Shakespeare North Playhouse, Colour the Clouds. She is a freelance actor with Odd Arts in their roster of immersive forum theatre plays. Olivia also recently worked on 'The Stolen Girl' - Disney+.



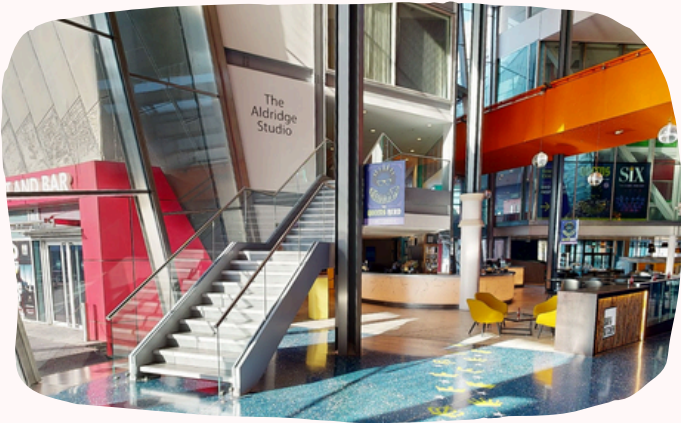
Katie Cannon is an Actress from Stoke-On-Trent, she trained at the Guildford School of Acting and works across Theatre, Television and Film. Theatre credits include: 'Alice in Wonderland' - New Vic Theatre. Television credits include: 'Autopsy' - ITV. Film Credits Include: 'Bad Day at the Office' - Action Xtreme. Katie is also starring in multiple short films currently in the festival circuit including BAFTA qualifying festivals.

Where is the show?



This is the **building** where you will see our **show**, it's called **Lowry**. It's named after L. S. Lowry, a very famous artist.

When you **arrive**, you will need to **walk through a security scanner**. **Security staff** might ask to check your bag.



Then **turn left**, walk past the **Box Office**, and, when you reach the **Aldridge Studio** stairs, a **member of staff** will scan your tickets.

You might want to **go to the cafe** before you go up to the **first-floor waiting area**.



To get to the waiting area, you can use the stairs or the lift.

Once you are there, you will find **toilets and a water fountain**.



A member of **staff** will tell you when it's time to go up to the **studio on the second floor**, where you will see **Wren's World**.

You'll find your **allocated seat number on your ticket**.

How will I experience the show?



When you come into the **studio**, there will be **lights on** to help guide you to your seat. There will also be **music playing quietly** in the background.



Use this time to **get comfy** and organise any fidget toys, ear defenders, and drinks you have with you. It's okay for you to chat to each other before the show.

You are welcome to look at the set from your seat, but **please do not cross the line and touch the set and props**.



Before the show begins, the company will come on stage to introduce themselves and explain what will happen.

The show is 1 hour long, with no interval.

Our shows are **relaxed** which means you **don't have to sit still or be quiet**. You can move around, go to the toilet, or take a break whenever you need to.



Just come back in when you are ready!

What will the show look and sound like?

In the **show**, we use **stage lights** and a **projector**. The **lights** and **animation** help us to tell the **story**. The **lights will be bright, colourful and sometimes flash**. Some parts of the show will be **dark**, but we **won't ever turn all of the lights off**.

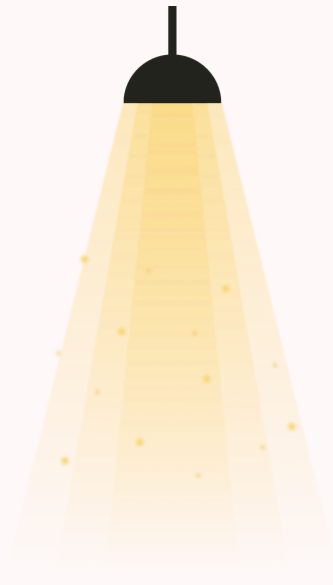


Photo Credit: Tom Doona

The **animation** shows us the **adventure inside Wren's mind**. You will see the sisters sailing the sea, exploring the jungle, and flying to space! **Sometimes the pictures might wobble or "glitch" to show that Wren is feeling upset and experiencing a Neurodivergent shutdown.**

We also use **music and sounds to tell the story**. You will hear lots of **different instruments** in the recorded music, as well as some other sounds that **help us understand how Wren is feeling**.

You can **wear your ear defenders** if you like, and **click the words below if you want to hear some of these sound effects before you come to see the show**.



'Thunder' | 'Shutdown' | 'Glitch' | 'Poison'

How might the show make me feel?



We have made the **show** to help people better understand how **everyone experiences the world differently**, so that we can be **kinder to each other**.



When you see the show, you might feel **excited, happy, nervous and a bit sad sometimes**.

You might **laugh**, and you might **cover your ears or eyes at some bits**.

Some things in the show might **remind you of your life and how you feel**.



Sometimes in the **show, the sisters shout and push each other**. It is important to know that **the actors are only pretending**. **No one is really getting hurt!** They are just acting to show us how the sisters feel.



You can be yourself and feel however you feel at our show!

After the show, you might want to **clap and cheer, but it's okay if you don't**.



“We are delighted to welcome you to Wren's World! We have been working on this project for over two years and we believe it is the most important show we have ever made. We want to authentically represent neurodivergent young people on stage and challenge the stereotypes that many people have about Autism. We hope you enjoy watching Wren and Robin on their adventure!” - Colour the Clouds

At Colour the Clouds Theatre Company, we are all theatre makers as well as parents... we have 8 children between us! Creating Wren's World was inspired by parenting our wonderful mix of Neurodivergent and Neurotypical kids.

We want to show the real challenges of being Autistic whilst also celebrating the beauty of a Neurodivergent mind.

“When a flower doesn't bloom, you change the environment in which it grows, not the flower”. - Alexander den Heijer

We want to show that with the right conditions, Autistic young people can shine. We want to smash harmful stereotypes and encourage kindness so that everyone is valued and supported in our society. In short, we want to change the world and we think theatre is the perfect place to start!



“It is estimated that 1 in 30 people in the UK are Autistic, with up to 4 times as many boys being diagnosed as girls. Although we know this is not an accurate representation, 80% of autistic girls remain undiagnosed at age 18.” - Autistic Girls' Network

Research, Resources & Support Services:

[Autistic Girls Network](#)

[National Autistic Society](#)

[Together Trust](#)

[Children's Adventure Farm Trust](#)

[GM Autism](#)

[Starling CIO](#)

[Unlimited](#)

[The Hidden 20%](#)

[20 Stories High](#)

[Graeae](#)

Connect with us:

[Website](#)

[Instagram](#)

[Facebook](#)

Thanks to Inscape House School, Saffron Broderick for creating artwork for our guide, The Children's Adventure Farm Trust, Salford Parent Carer Forum, University of Salford, Dr Luisa Sanz and Arts Council England

