

LOWRY

Technical Specification

The Quays Theatre

The Lowry
Pier 8
Salford Quays
Manchester
M50 3AZ

Get In

Under cover loading bay for three trucks maximum trailer height 4.5m (14ft 6inch)
(2 for the Lyric Theatre and 1 for the Quays Theatre)

Bay dimensions: 10.5m (W) x 15.0m (D) x 4.5m (H)

Please confirm parking requirements prior to get-in and please note all articulated type vehicles must require a 'banksman' to be onsite for access onto the service road & loading bays. If no banksman is present vehicles will not be admitted access by our Security team.

Access into the theatre is through the goods lift or into scene dock located to the rear of the Lyric stage, then through the Quays scene dock to the Quays stage. (Access via The Lyric is dependent on the shows in that space)

Loading bay floor level to scene store floor level: 1.2m – Dock levellers installed.

Dimensions of dock doors: 6.3m (W) x 3.1m (H)

Lyric scene store dimensions: 20m (W) x 15m (D) x 10.5m (H)

Dimensions of opening from Lyric scene store to Quays scene store: 2m (W) x 3m (H)

Quays scene store and stage separated by a pair of hinged doors, 4.1m (W) x 5.2m (H) located centrally at the rear of the stage.

Goods lift, dimensions 2.5m (W) x 4.0m (L) x 3.0m (H) the exit door on the Quays dock side is 2.4m x 2.4m

Stage Area

Type of stage: End, Thrust, Promenade flat floor and in the round. No fixed proscenium.

Depth of stage from stage edge to rear stage wall: 10.2m

Adjustable proscenium formed from sliding side panels and a flown header.

Maximum width of stage: 20m (wall to wall)

(Normal "end on" playing area is 8m deep x 10m wide. Pros opening can be set between 9m – 11m, max height of pros – 7.5m)

Clear height to under grid: 9.80m

Flying height of bars 9.38m

Clearance under fly floors: 7.5m

Stage floor flat. English oak T&G painted with vinyl silk black paint. **Fixings into the floor are to be kept to a minimum & are at the technical department's discretion – max size of fixing is a No 8/4.5mm Screw**

Seating capacity

473 End stage (with no extension & Rows A & B)

441 End stage (with extension)

400 Thrust stage

280 Flat Floor (Promenade) *restricted view seats vary with format*

364 Long traverse

437 Short traverse

441 In the round

A series of four lifts and seven seating wagons reconfigure the theatre for the various seating formats. Lifts finished as stage floor surface. With lift no.1 lowered, 10 – 20 musicians can be accommodated in the pit. Please note musicians only available in 'End Stage' configuration. Staging formats other than End Stage must be booked at contract stage and are subject to staffing costs to reconfigure the space.

Stage capacity _____

50 when in standard end on.

80 when rows A and B are removed, and treads are in place.

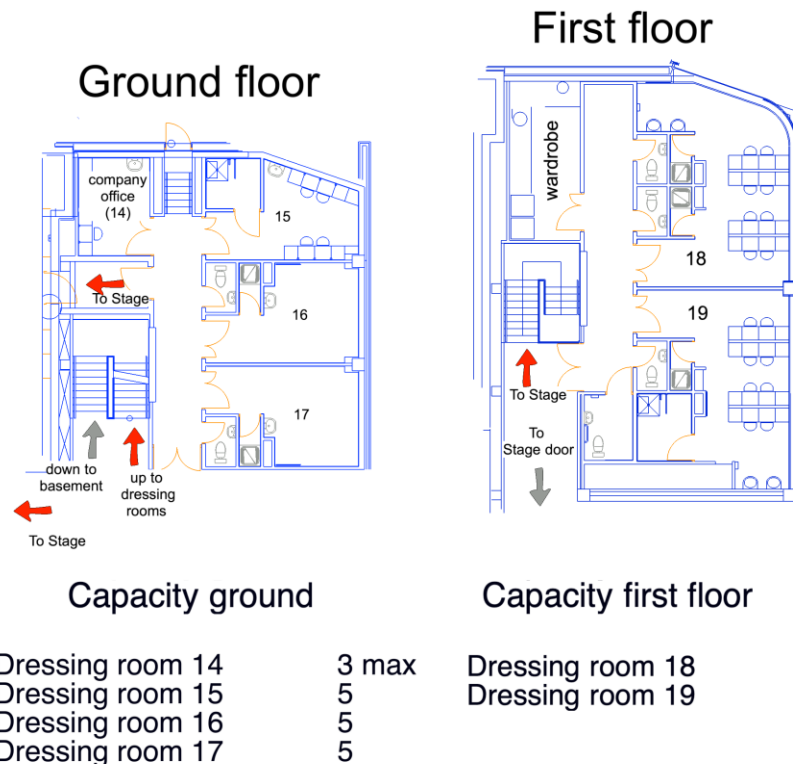
Backstage accommodation _____

Dressing rooms

Dressing room 14 normally used as a visiting company office and has a telephone point.

Telephone number - 0161 876 2118.

Internet access is available. Please contact for current charges.



Total 32

Wardrobe at first floor level access via goods lift. Lift dimensions 2.5m (W) x 4.0m (L) x 3.0m (H) and includes 2 X industrial washing machines, 2 X dryers, iron and ironing board. (All facilities chargeable)

Visiting company office at ground floor level. With 1 telephone point, desk and 13 amp power. Broadband internet access is available and a charge for use applies.

Control suite Located at the third-floor tier level with access to lighting bridges, dimmer room and audio rack room. Lighting control, and followspots are also located here.

Main sound position is rear auditorium. Audio ties available in control room for small desk.

Rigging and flying

(No full flying height please see above dimensions)

Flying system: Stage left. Suspension grid

39 single purchase counterweight sets (Flying plot on page 11)

13.5m bars at 200mm centres on five lines

34 cross stage rated at 350kg UDL, 2 up-down stage (CW's 36 & 37) rated at 300kg UDL, and CW's 38 & 39 are sets diverted to pick up over auditorium area rated at 300kg UDL

3 x 500kg electric hoists with truss for use in the FoH Grid or over stage as required.

Grid surface extends over auditorium. Grid structural loading capacity: 2.5 kN/sq.m

4 x Grid frames and a selection of load spreaders are available please ask for details.

8 x ground anchor points are located on the perimeter of the stage floor.

4 x beam clamp anchor points are available for use in the auditorium from stock.

2 x 500kg loadstar motors on grid stands for set builds.

Note First useable LX bar is CW2. The last *proper* flying bar is CW34, please refer to flying plot.

Loose Truss and Motors (shared between venues)

2 x 2.5M Litec QX30SA truss

5 x 1M Litec QX30SA truss

11 x 2M Litec QX30SA truss

4 x 90° Litec QX30SA corner pieces

14 x 1T loadstar motors

2 x 500KG loadstar motors

2 x 4-way motor controllers

(An NRC House Familiar Rigger is required for use of these; cost of which is rechargeable)

Staging and rostra shared between venues POA

| | |
|----|--------------|
| 18 | 8'x4' |
| 8 | 4'x4' |
| 8 | 4' triangles |
| 4 | 4' Quadrant |
| 13 | 8' handrails |
| 8 | 4' handrails |

A selection of pre-cut legs are available, please contact for more details, Requests for specific sizes can be taken but charges will be applicable. As we have many different leg sizes, we do not supply skirts for the decking.

Masking

An adequate stock of black serge masking is available:

| | | | |
|-------------|---------------------------|------|---------|
| Legs | 4 sets | 8.5M | 2M |
| Full blacks | 2 sets | 8.5M | 2X 8M |
| Full blacks | 1 (shared between venues) | 9M | 9.9M |
| Full black | 1 (shared between venues) | 8M | 1 X 12M |
| Borders | 3 | 3M | 13.5M |
| Borders | 4 | 2M | 13.5M |
| Border | 1 (permanently on bar 1) | 1.5M | 13M |
| Cyc | 1 | 9M | 13M |
| Black gauze | 1 | 9M | 13M |
| White gauze | 1 | 9M | 13M |

Full tracked serge blacks on wings & US of CW 34 to form black box – These cannot be removed.

Licensing Requirements

All scenic elements should be made up from non-combustible material and/or inherently flame-retardant fabrics. Timber scenery should meet Class 1 when tested in accordance with BS 476 Pt 7. The scenery should be visibly stamped to this effect or it's standard should be supported by suitable certification.

Access equipment (shared between venues and subject to availability)

2 Genie GR-20, platform height 6M, **IPAF (3a) or equivalent required.**
1 Genie AWP-36S push around, platform height 11.1M **IPAF (1a) or equivalent required.**
1 Large Tallescope platform height 7.5m
1 Medium Tallescope platform height 5.9M
Stepladders, hand trucks etc. Please call the technical dept. for full details.

Temporary electrical supplies

| | | | |
|---------------------|-----------------------------------|-------------|----------------|
| Gallery stage right | | 1 x 32ATPN | BS 4343 socket |
| Gallery stage right | | 2 x 63ATPN | BS 4343 socket |
| Dimmer Room FOH | (Supply shared with main dimmers) | 2 x 125ATPN | BS 4343 socket |

Clean earth supplies:

| | | | |
|-----------------------------|-----|-----|----------------------|
| Down stage right | 63A | SPN | BS 4343 socket |
| Adjacent to all sound boxes | 13A | SPN | BS 4343 twin sockets |

Stage lighting

Control

Lighting control room is located on level 3 of the theatre, there is space available for a touring console in this room. An auditorium position next to the sound desk is possible but requires 6 seats to be held off prior to the show going on general sale.

ETC Gio 4k with 2 x 20 fader wing & 2 x 23inch touch screen
ETC Ion with 2 x 20 fader wing and 2 x 23-inch display (back up / plotting)
1 X rack mounted 4 port NET3 ACN gateway (universe 1, 2, 3, 4)

House lights and working lights are controllable via ETC Paradigm as DMX channels from the lighting desk on a HTP precedent.

Dimmers

6 X 48-way ETC sensor 3 dimmers containing 171 X 3KW & 8 X 5KW

Please enquire re distribution.

These are controlled via sACN on our ETC network with a DMX input either DSL or in the control room.

PLEASE DO NOT PLUG DIRECTLY INTO OUR NETWORK.

Building wide Howard Eaton DMX and Ethernet System and Patch which crosses over into the ETC network in the dimmer room.

All overhead dimmer outlets are via SOCAPEX connection. All on stage are 15A outlets.

Any big power consumption please contact technical management to discuss.

Lantern Stock

N.B. Lighting equipment must be rigged & de-rigged for each visiting company.

The only fixed element of the lighting system is the standard FOH rig.

Any items moved must be re-rigged as part of the get-out.

Bridge 1

| | | |
|---|--------------------------|------|
| 3 | 26° ETC Source 4 | 750W |
| 6 | 36° ETC Source 4 | 750W |
| 3 | 36° ETC Source 4 Lustr 2 | 167W |

Bridge 1 side

| | | |
|----|-----------------------------|------|
| 10 | ETC Source 4 par 5 per side | 575W |
| 4 | 26° ETC Source 4 2 per side | 750W |

Bridge 2

| | | |
|---|--------------------------|------|
| 3 | 19° ETC Source 4 | 750W |
| 6 | 26° ETC Source 4 | 750W |
| 3 | 26° ETC Source 4 Lustr 2 | 167W |

Bridge 2 side

| | | |
|---|-----------------------------|------|
| 4 | 26° ETC Source 4 2 per side | 750W |
|---|-----------------------------|------|

Under control room

| | | |
|---|------------------|------|
| 8 | 19° ETC Source 4 | 750W |
|---|------------------|------|

Loose Equipment

Lanterns are shared between the 3 theatres & must be booked in advance.

Charges apply to some items, which are marked POA.

Profiles

| | | |
|----|-------------------|------|
| 32 | Strand SL 15/32 | 600W |
| 17 | Strand SL 23/50 | 600W |
| 8 | ETC S4 19° | 750W |
| 16 | ETC S4 26° | 750W |
| 16 | ETC S4 36° | 750W |
| 12 | Selecon SPX 15/35 | 800W |
| 12 | Selecon SPX 25/50 | 800W |

Fresnels / PC's

| | | |
|----|-----------------|-------|
| 74 | Cantata Fresnel | 1.2KW |
|----|-----------------|-------|

Par Cans

| | | |
|----|---|------|
| 99 | Par 64 (54 xCP62: 32xCP61: 13xCP60) | 1KW |
| 24 | Par 64 CP62 (mounted on 4x 6way bars) | 1KW |
| 6 | Par 64 CP61 (mounted on 2x 6way bars) | 1KW |
| 6 | Par 64 CP60 (mounted on 1x 6way bar) | 1KW |
| 22 | ETC source 4 Pars | 575W |
| 12 | ETC ColorSource Deep Blue LED Par with MFL filter | 89W |

Floods

| | | |
|---|-------------------------------------|------|
| 7 | ETC ColorSource Cyc Flood LED (POA) | 116W |
|---|-------------------------------------|------|

Moving Lights POA

| | | |
|----|---------------------------|------|
| 22 | Chauvet Rogue R2 LED wash | 324W |
| 6 | Chauvet Rogue R1 LED spot | 297W |

Items listed require advance booking notice of at least 4 weeks, as they may have been booked for other visiting productions.

Miscellaneous items POA

1 x MDG Atmosphere hazer
1 x MDG ATme hazer
3 x Look Solution Unique 2 hazers
2 x Look Solution Viper NT fog generators
1 x Look Solution Tiny C07 small battery-driven fog generator
2 x 16inch mirror balls
1 x Anytronics DMX strobe
2 x Thunderdrome 3000 DMX strobe
Various birdies, various stands/cables/multicores etc.
60 x RAT stands shared between venues.

Visiting companies must supply their own gel, though a small stock of Pre-cut colour is available FOC

Use of Pyrotechnics, smoke, vapour, laser & other special effects.

Please note that the Quays Theatre does not have a fire safety curtain.

The Lowry MUST be informed prior to the production arriving at the venue that a company intends to use special effects. The full details along with risk assessments must be supplied and, in some cases, these need to be passed to the licensing authorities before authorisation to use them is granted.

Sound and communications

Audio tie line infrastructure

Audio tie lines terminating on control room audio jack field. 48-way starquad audio tie line loop, terminating on multi-pin sockets in the control room, rear auditorium and DSR, to enable the mixing console to be located in these positions.

Loudspeaker line infrastructure

Loudspeaker lines on NL4 sockets terminated on audio rack loudspeaker patch.

Sound mixing consoles.

Subject to availability house consoles are:

Yamaha DM7 with Rio 3224-D3

Soundcraft Vi3000 Digital Console with stage box

Soundcraft Vi1000 Digital Console with digital stage box

Yamaha QL5 with Rio 3224-D

Allen & Heath Mix Wizard 14:4:2 10 mic channels/2 Stereo Channels

Standard loudspeaker system (Suitable for spoken word, theatre playback & comedy)

6 x L'Acoustics 12 XTi Mounted Left & Right as Stalls, Tier 1 & Tier 2 Prosc System

4 x L'Acoustics SB18 sub bass

Additional loudspeaker system

(For music gigs & louder theatre shows, subject to a hire cost and pre-boking is essential)

4 x L'Acoustics ARC

4 x L'Acoustics ARC Focus with SB18 sub bass hung as a centre cover.

2 x L'Acoustics 8 XTi rear delays

2 x L'Acoustics 8 XT front fills

Loudspeakers non-installed (Subject to availability and a hire cost; up to 4 wedges are included per venue)

Foldback / effects:

6 x APG DX12 (can run as 6 mixes, 6 flying
Frames available)

8 x APG DX15 (can run as 8 mixes)

Power amplifiers:

APG SA 30:2

Lab Gruppen 1300C

Outboard equipment

1 X Mac Mini Q-Lab 5 Focusrite Scarlett 18i20 3rd Gen 18-In/20-Out Audio Interface.

Extra outboard equipment available

(This equipment is shared between 3 theatre spaces corporate facilities & must be booked in advance)

3 x XTA GQ600 Two channel 1/3 equaliser

1 x BSS DPR504 Four channel noise gate

1 x TC electronic D-Two Delay

1 x Yamaha SPX2000 Digital effects (in with Vi 3000)

1 x Roland RD-700 Electric piano

Microphones

(This equipment is shared between 3 theatre spaces corporate facilities & must be booked in advance)

8 x Shure Beta 58
8 x Shure SM58
1 x Shure Beta 52
2 x Shure Beta 91
4 x Shure Beta 57
4 x Shure SM57
2 x Shure Beta 87
1 x Audix D6
5 x Sennheiser MKH40
6 x Sennheiser MKH60
4 x Sennheiser E604 Evo drum mics
6 x Sennheiser 904 drum mics
8 x Crown PCC160
1 x AKG 414B-ULS
2 x AKG 414B-XLS
4 x AKG SE300/CK91
4 x AKG SE300/CK93
2 x Beyer 201
2 x Beyer M88
4 x DPA 4099 (Classical kit)
10 x BSS Active DI
4 x Radial Pro D2 stereo DI

Selection of stands, cables, connectors etc.

Radio microphones (Subject to availability and a hire cost)

1 x Shure ULX-D 2-way receiver racks
2 x Shure ULX-D 4-way receiver racks
4 x Shure ULX-D Handheld radio mics with SM58 or SM58 Beta
2 x Shure ULX-D Handheld radio mics with SM58
6 x Shure ULX-D body pack
6 x Shure MX 185 clip mic heads
6 x DPA 4061 Lavalier
6 x DPA 4066 head mics
2 x Shure GLX-D 2.4Ghz SM58 systems (Suitable for Q&A; God Mic use etc)

Selection of stands, cables, connectors are available.

Please check with the technical department for frequencies available for toured equipment. Please note we hold a venue licence for shared channel 38 but this may be allocated to another production. Please be advised that Media City is located next to our venue and uses some Channel 38 radio mics, we would always recommend using site specific licenced channels where possible. We hold 23 spot frequencies on channel 40-45 which are allocated to our own theatre radio mics & corporate AV department radio mics. By request 5 of these frequencies are available for tour use. On occasion we are able to release spot frequencies held for house equipment to allow tours to book whole blocks of channels. This must be agreed in advance and requires us as the venue to authorise their release to OFCOM :

626.000(40); 626.600(40); 630.850(41); 636.600(41); 638.200(42)

Specific frequency allocations MUST be approved in advance of arrival to avoid issue with other productions & events taking place at the same time. The Lowry will not permit the use of radio equipment without this advanced detailed notice.

Stage managers desk; Ring intercom & Video System

A mobile GDS SM desk connects either stage left or stage right, paging control and four-channel Clearcom Helixnet digital intercom master station & cue light control, patchable system with boxes normally located at LX control, sound control & fly floor please check for availability of Q-lights boxes. The desk is equipped with 3 colour video monitors. A BNC 75ohm patching system with distribution is available. 2 video cameras: 1 x colour, 1 x IR Camera Show relay and call system to backstage areas are installed.

Clear-com digital Helixnet party line coms system & 4-way RTS radio coms system is installed. Helixnet twin channel belt packs and headsets are located at LX control, sound control, fly floor, follow-spots & Stage Mangers desk. Please check for availability of additional sets.

Assisted listening system

Two channel Sennheiser infrared listening system suitable for use by hearing impaired persons & audio description.

A Sennheiser Mobile Connect system is installed for customers to access show relay and audio description, when available, via compatible mobile devices.

AV Equipment

Subject to availability and hire cost:

1 x Panasonic PT-DZ770EJK (7,000 Lumen single chip DLP projector).

1 x Panasonic RZ970 (10,000 Lumen, laser light source)

Each projector has a flying frame supplied with a lens which we have the options of a Standard lens (1.7 – 2.3) or Short throw lens (0.8 –1).

1 x 4.2m x 3.6m screen with front and rear surface options is available (This gives a 16x9 ratio screen size)

A MacBook Pro can be supplied for PowerPoint; Keynote or QLab5 (Stereo Audio only from the on-board sound card)

Other projector options are hired in from a local AV firm with whom we are able to obtain competitive rates from. Please enquire if you have a specific AV set-up you require.

Backstage Accessibility

- Accessible entry is via an access lift located at Stage Door.
- All dressing rooms in the Quays Theatre have accessible showers and toilets.
- The stage areas are fully accessible from backstage.
- Disabled parking is available on the service road.

350KG UDL,

| Front of Stage | From front | From Tabs | Description |
|----------------|------------|------------|--------------------------------|
| Track | 0.8 | 0 | House tabs |
| 1 | 0.9 | 0.1 | 1m soft black border |
| 2 | 1.25 | 0.45 | Standard Rig LX 1 Bar |
| 3 | 1.45 | 0.65 | |
| 4 | 1.65 | 0.85 | |
| 5 | 1.85 | 1.05 | |
| 6 | 2.05 | 1.25 | |
| 7 | 2.25 | 1.45 | |
| 8 | 2.45 | 1.65 | |
| 9 | 2.65 | 1.85 | |
| 10 | 2.85 | 2.05 | |
| 11 | 3.05 | 2.25 | |
| 12 | 3.25 | 2.45 | Standard Rig LX 2 Bar |
| RSJ | RSJ | RSJ | |
| 13 | 3.85 | 3.05 | |
| 14 | 4.05 | 3.25 | |
| 15 | 4.25 | 3.45 | |
| 16 | 4.45 | 3.65 | |
| 17 | 4.65 | 3.85 | |
| 18 | 4.85 | 4.05 | |
| 19 | 5.05 | 4.25 | |
| 20 | 5.25 | 4.45 | |
| 21 | 5.45 | 4.65 | |
| 22 | 5.65 | 4.85 | |
| 23 | 5.85 | 5.05 | Standard Rig LX 3 Bar |
| RSJ | RSJ | RSJ | |
| 24 | 6.45 | 5.65 | |
| 25 | 6.65 | 5.85 | |
| 26 | 6.85 | 6.05 | |
| 27 | 7.05 | 6.25 | |
| 28 | 7.25 | 6.45 | Standard Rig Back Light LX bar |
| 29 | 7.45 | 6.65 | |
| 30 | 7.65 | 6.85 | Standard Rig Cyc flood bar |
| 31 | 7.85 | 7.05 | |
| 32 | 8.05 | 7.25 | |
| 33 | 8.25 | 7.45 | |
| 34 | 8.45 | 7.65 | Standard Rig Cyc Bar |
| Track | 8.9 | 8.1 | With Split Full blacks |
| Back Wall | 9.95 | 9.15 | |

Technical Contacts

The Lowry Theatre
Pier 8
Salford Quays
M50 3AZ

| | |
|------------------|---------------|
| Administration | 0161 876 2020 |
| Stage Door | 0161 876 2107 |
| Box Office | 0161 876 2000 |
| Security (24hrs) | 0161 876 2111 |

Please can all advance show information be sent to Phil Maxim.

Head of Technical Theatre

Phil Maxim

Direct Line

0161 876 2073

Email

phil.maxim@thelowry.com

Technical Manager - Stage

Adam Fuller

Direct Line

0161 876 2047

Email

adam.fuller@thelowry.com

Technical Manager - Sound

Stuart Davies

Direct Line

0161 876 2047

Email

stuart.davies@thelowry.com

Technical Manager - LX

David Clare

Direct Line

0161 876 2047

Email

david.clare@thelowry.com

Technical Manager - LX

Joseph Reynolds

Direct Line

0161 876 2047

Email

joseph.reynolds@thelowry.com