

**LOWLANDS**

**WELCOMES**

# CONTENTS

- 03 WELCOME**
- 04 KEY INFORMATION**
- 08 LOWRY FACILITIES**
- 09 MAP OF BUILDING**
- 13 GOOD TO KNOW**
- 15 OTHER FACILITIES**
- 16 MAP OF MEDIA CITY**



# WELCOME

On behalf of everyone at Lowry we'd like to welcome you to our building and hope that you enjoy your time with us.

Opened by the Queen on April 28<sup>th</sup> 2000, Lowry is an international multi-arts centre and the most visited visitor attraction in the North West. Sitting at the heart of one of the world's most successful cultural regeneration projects our building is home to the LS Lowry collection, three theatres (Lyric, Quays and Aldridge Studio) and an award-winning learning and engagement programme.

Lowry's theatres present over 1000 performances a year, reaching 500,000 audience members with our diverse programme of drama, opera, musicals, dance and comedy. Lowry Partner companies include National Theatre, Birmingham Royal Ballet, Rambert, Opera North, Access All Areas, Ockham's Razor, Far From the Norm and Lung – and the programme regularly features productions from the nation's most established companies, including Matthew Bourne's New Adventures, Royal Shakespeare Company, Akram Khan Company and Complicite.

Lowry has an extensive commissioning and artist development programme that showcases its commitment to the development of new work for theatre. Recent commissions and co-productions include *42 Balloons*, *Operation Mincemeat*, *Police Cops: The Musical*, *Charlie Cook's Favourite Book*, *Complicite's Drive Your Plow Over the Bones of the Dead*, *Rambert's Peaky Blinders* and *Nigel Slater's Toast*.

We hope you enjoy your time with us – and take the opportunity to learn a bit more about us and our work.

**Steve Cowton and Matt Eames**  
Co-Heads of Theatres



*42 Balloons*, Lowry (2024)



# KEY INFORMATION

# KEY INFORMATION

## OPENING TIMES

Lowry is normally closed to the public on Mondays.

On other days we open at 11am and close after the final performance.

## KEYS AND PASSES

All keys and backstage passes MUST be signed out and in and returned to Stage Door at the end of each performance/day. **Unreturned passes and keys are chargeable at £40.**

Visiting Company Members must display a security pass at all times while they are backstage. These will be issued by stage door upon arrival.

## WI-FI

**Name:** Lowry-WIFI  
**Passcode:** drawings24

## TELEPHONE NUMBERS

**Stage Door:** 0161 876 2107  
**Box Office:** 0161 876 2352  
**Lowry Bar & Kitchen:** 0161 876 2121

## PARKING AND TRANSPORT

### Travelling by car

Please note there is **no parking** available at Lowry.

Parking is available in the nearby multi-storey car parks – the nearest of which is at the Quayside shopping centre opposite.

Visiting Company Members can pre-book daily car parking for £6.50 per day in the **Quayside Multi-storey Car Park** which is only 200m from stage door. The car park now operates with a ticketless system – but if you bring proof of purchase to Stage Door we will be able to give you a code to redeem online.

[Day tickets can be bought here](#)

There are a limited number of car recharging points available within the Car Park

[Car Parking \(quaysidemediacityuk.co.uk\)](http://quaysidemediacityuk.co.uk)

### Travelling by bicycle

Bicycles can be left at our bike rack at stage door – which is protected by CCTV – but bicycles, e-bikes or scooters must not be stored in dressing rooms or within the building. We have a couple of bicycle locks which can be borrowed from Stage Door if necessary.



### Travelling by tram

The nearest tram stops are **Media City** or **Harbour City** on the Eccles or MedicCityUK line, or the **Imperial War Museum** on the Trafford Centre line.

Trams can be caught from either Piccadilly or Victoria Rail Stations, and also from Manchester Airport.

There is a wide range of useful information on our website – [thelowry.com/pQM43S7/your-visit/plan-your-visit](http://thelowry.com/pQM43S7/your-visit/plan-your-visit)

Do please allow extra time for your journey if there are major events or fixtures at Old Trafford football or cricket Grounds.



# KEY INFORMATION



## THE VILLAGE

The Village is our backstage Green Room where visiting Company Members may meet and eat their own food. There are two vending machines – which serve free tea and coffee – fridges, microwaves and a toaster.

As The Village is a shared area, we ask all Visiting Company Members to treat the space with respect and to clear up after themselves. There are bins and cleaning materials provided for this purpose.



# KEY INFORMATION



## BACKSTAGE ACCESSIBILITY

All dressing rooms at Lyric Theatre, Quays Theatre, Aldridge Studio have accessible showers and toilets.

All stages (Lyric Theatre, Quays Theatre, Aldridge Studio) are accessible from backstage though the Studio stage is accessible by a lift.

Disabled parking is available on the service road by the loading dock.

Accessible backstage entry is via Stage Door and Quays Theatre.

## ACCESS RIDERS

Contact [TechnicalManagers@thelowry.com](mailto:TechnicalManagers@thelowry.com) to speak about your/your company's access riders.

## BACKSTAGE ACCESS VISUAL STORY

Backstage Access visual story is available upon request. Please email Grace Ng, Access Producer on [grace.ng@thelowry.com](mailto:grace.ng@thelowry.com)

Further information about Front of House Access can be found on our website [here](#)



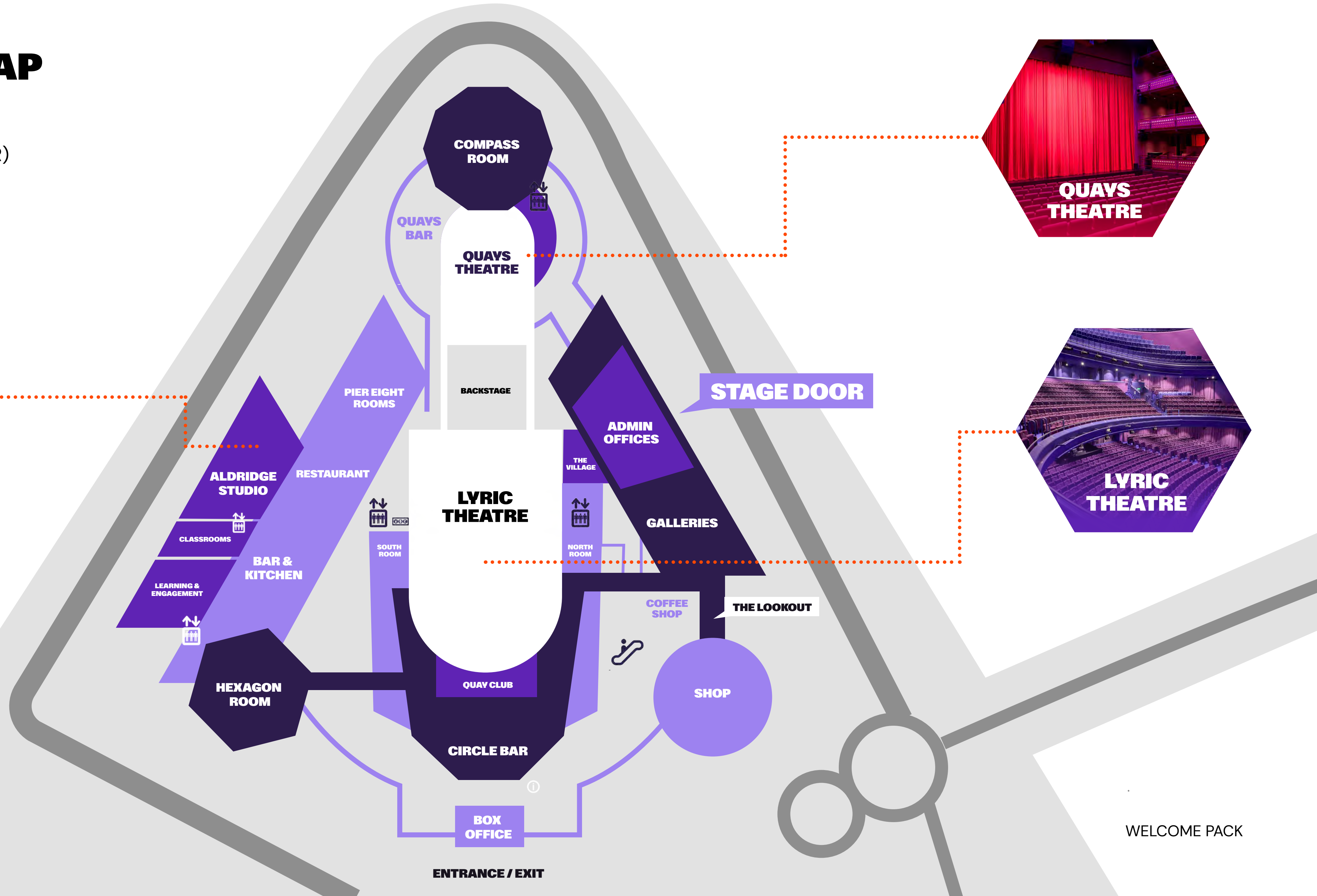
# LOWRY FACILITIES



# BUILDING MAP

## KEY

- LEVEL 1 (GROUND FLOOR)
- LEVEL 2
- LEVEL 3





# FOOD & DRINK



## RESTAURANT

At the Lowry Restaurant you can enjoy modern British flavours and hints of cultural influence in our dining room overlooking the Quays waterfront.

**Hours:**  
Lunch or Pre-matinee from 12pm – 2pm  
Dinner or Pre-Theatre from 5pm – 7pm



## BAR & KITCHEN

Grab a drink or a bite to eat and soak up the atmosphere. You'll find the bar right next door to the restaurant and only a few steps from our theatre auditoriums.

**Hours:**  
Tues-Fri, 11am until after the performance interval  
Sat & Sun, 10am until after the performance interval  
Food served daily from 12pm until 30 minutes before curtain on show days and until 4pm on other days.



## COFFEE SHOP

Located next to our Lowry shop which is well worth visiting.

Open all day until the last interval.



## SHOP

Explore our carefully curated range of gifts and LS Lowry inspired products.

# 25% OFF

**Visiting companies** receive 25% discount off all food and drink and purchases in the shop. Please show your visitor pass and let staff know which performance you are working with.

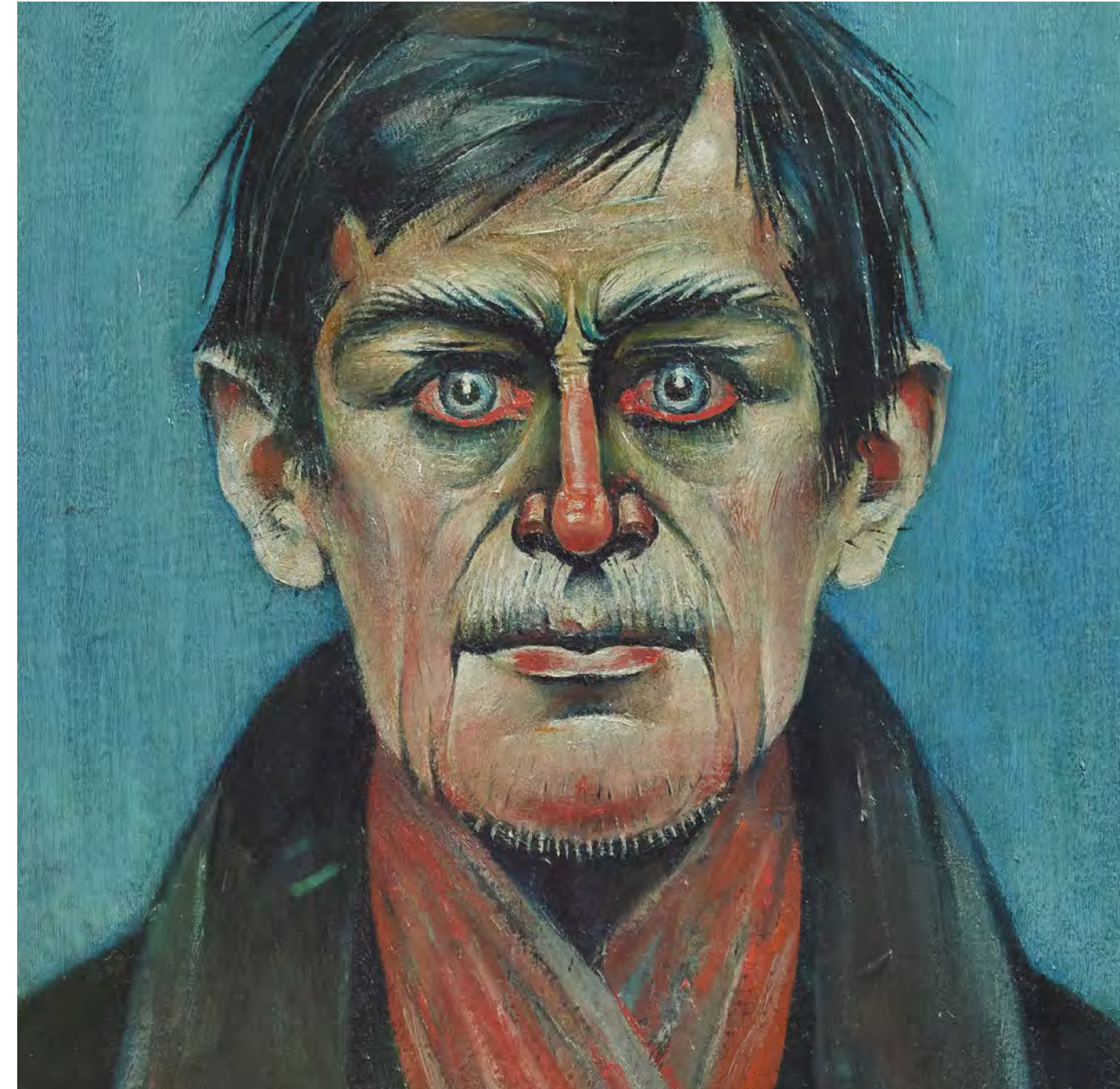


# GALLERIES

We hope that during your visit you will have an opportunity to visit the Galleries

Lowry houses the largest public collection of paintings and drawings by LS Lowry in the world. Featuring some of his most famous and important works this exhibition shows an artist remarkable for his diversity and fearless innovation.

The Galleries also host contemporary exhibitions which change over time. Find out more information about what's on in the galleries [here](#).



## OPENING TIMES

Tues – Fri | 11.00–17.00  
Sat– Sun | 10.00 – 17.00  
Monday | closed

## FREE TALKS

Talks on LS Lowry  
Every day at 12pm and 2pm



# ENVIRONMENTAL SUSTAINABILITY

The Theatre Industry has a substantial impact on the environment. Lowry is committed to doing what we can to minimise this where possible – but we can't do it by ourselves. Therefore we would love for you to take a look at [Lowry's Green Rider](#) and follow the guidance where you can.

## Some of our initiatives so far:

- 75% of staff are Carbon Literacy trained
- Introducing E-tickets to reduce paper usage
- No print season brochures or flyers in the building
- Increasing plant-based dishes on our menus
- 0% of waste goes to landfill
- Removing all single use plastics in our catering outlets
- Asking all members of staff to use reusable cups and water bottles
- LED lighting across 85% of the building
- Using environmentally friendly cleaning products
- Achieving Theatre Green Book Sustainable Operation and Sustainable Buildings Baseline





**GOOD TO KNOW**



# GOOD TO KNOW

## PETS AND ANIMALS

We regret that pets and animals are no longer allowed in dressing rooms – apart from Guide Dogs and Assistance Dogs.

## TAXIS

**1010 Taxis:** 0161 794 1010; 0161 793 1010; 0161 281 1010  
**SALTAX:** 0161 737 2222

## GARAGE

**EP Cars Ltd,** 45 Waybridge Industrial Estate, Daniel Adamson Road, M50 1DS, 0161 3763 587

## CHILDCARE

Find local childcare providers on Salford City Council website below.

All childcare options in Salford: [directory.salford.gov.uk/kb5/salford/directory/family.page?familychannel=0](https://salford.gov.uk/kb5/salford/directory/family.page?familychannel=0)

List of verified child minders: [directory.salford.gov.uk/kb5/salford/directory/results.page?familychannel=2&qt=&term=](https://salford.gov.uk/kb5/salford/directory/results.page?familychannel=2&qt=&term=)

## DOCTORS

Please note that we do not have a 'theatre doctor'. In the first instance please contact the NHS on 111 who will advise on the availability of local GPs who are able to see temporary residents. We have first aiders in the building, please contact Stage Door when in need.

## CLOSEST HOSPITAL A&E

**Salford Royal Hospital,** Stott Lane, Salford, M6 8HD, 0161 789 7373

Please find a list below of health service providers in the local area, which have been included based on their **locality**.

## PHYSIOTHERAPISTS/SPORTS MASSAGE

**Elite Performance Physio Manchester,** Federation Gym, 60 Spear Street, M1 1AW, 07538 932131

**Therapy-First Physiotherapy,** Media City, The Greenhouse, Salford, M50 2EQ, 07545 767 067

**Metro Physio,** 30 Crescent, Salford, M5 4PF, 0161 745 7551

## CHIROPRACTOR

**Salford Chiropractic Clinic,** Sorrell Bank House, 23 Bolton Road, Salford, M6 7HL, 0161 736 9855

## VOCAL COACH

**Anne Leatherland – Vocal Intuition** (primarily via Zoom at short notice) 07854 045050

## HAIR AND WARDROBE

**Nikki Armstrong**  
havingahairmare@gmail.com

## DENTISTS

**YOR Dental,** Unit 1 Digital Park 3 Pacific Way, Salford, M50 1DR, 0161 503 0915

**Windsor Dental Practice,** Belvedere Road, City Centre, Salford, M6 5EQ, 01753 868666

**Revive Dental Care,** 2 Bexley Square, Manchester M3 6BZ, 0161 834 5166

## PHARMACIES

**Boots Pharmacy,** Regents Park, Ordsall Lane, Salford M5 3TP, 0161 834 9316

**G Pharma,** Dakota South, Salford M50 2PU, 0161 877 8999

**K's Chemist,** Ordsall Health 120 Phoebe Street, Salford M5 3PH, 0161 872 7257



# OTHER FACILITIES



# OTHER AMENITIES & FACILITIES

## NEWSAGENT AND POST OFFICE

The nearest newsagent and post office are in the QuaySide shopping centre.

## SUPERMARKETS

**Sainsburys Local**, Michigan Tower, Media City, M50 2HG,  
Open 7am – 11pm

**Tesco**, Trafford Road, Salford Quays, M5 3AW,  
Open 6am – 11pm

**Co-op**, Red Road, MediaCity, M50 2BS,  
Open 6am – 11pm on Mon-Sat, 11am – 5pm on Sun

## GYM

**Virgin Active Salford Quays** (50 yards from Lowry),  
QuaySide Mall, Salford Quays, M50 3AH, 0161 876 6111

[Salford Quays Gym & Health Club | Virgin Active](#)

Day passes and special deals are available – please enquire directly at the gym.

## CINEMA

**Vie Cinema**, QuaySide Mall, Salford Quays, M50 3AG,  
0870 998 1878

## RESTAURANTS

There are numerous restaurants on the Lowry Plaza, facing Lowry and in MediaCity.

<b>Lowry Plaza</b>	Nandos, Craftbrew, Café Rouge, Turtle Bay, UNAGI, Bella Italia, Pond Quay, The Alchemist and Pizza Express.
<b>MediaCityUK</b>	Pret a Manger, Wagamamas, Prezzo, The Dockyard, Marco's New York Italian, The Botanist, Love Conquers All, Penelope's Kitchen and Pokusevski's
<b>Central Bay &amp; Kargo Food Hall</b>	New foodhall in MediaCity bringing 20 different independent kitchens including Tang, Leopard Pie, Bab K, Jerk Junction and Tzatziki all under one roof.
<b>11 Central</b>	11 Central bar and microbrewery based at Central Bay, is a brand-new concept inspired by unexpected combinations.
<b>Quayside Mall</b>	Various fast food restaurants including Subway, Burger King, Harry Ramsden's, Chicken Cottage and Costa.





# MAP OF MEDIA CITY

A useful map showing Lowry and surrounding locations across Media City. Courtesy of our partners at Media City.

For more information, visit [www.mediacityuk.co.uk/visit-us/](http://www.mediacityuk.co.uk/visit-us/)

**MEDIA CITY**

Spend the day.

